

Project Info



23 / 07 / 2012



CC5 Bulk Rolls



416sqm



Vertical layers



Bogota D.C.,
Colombia



MERT S.A.S.



CC5 was used to stabilise and protect a slope suffering from severe surface erosion and slip. The erosion threatened to destabilise a road at the crest of the slope and damage housing at the foot of the slope from falling debris.

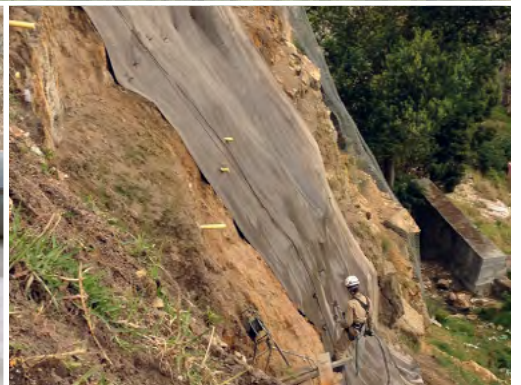
[CLICK TO WATCH VIDEO](#)



The project site before CC installation, showing severe erosion.



CC was dispensed from a spreader beam, allowing it to be laid at a rate of over 150m/day



Soil anchors and drainage pipes were installed prior to laying CC, which was easily tailored around these features.



200x200mm steel plates were used to secure the CC to the slope face using the soil anchors.



Joints were overlapped by 100mm and fixed with screws at approximately 200mm intervals.



CC was secured at the crest with a concrete filled anchor trench.

